

Castle Solar Park

PRE-CONSTRUCTION MEETING

VAN DYKE LYNCH

Monday, August 25, 2025 | 6:00p



AGENDA

- Welcome/Introductions
- Overview & Recap
- Construction Timeline
- Road Closure and Other Street Information
- Questions





Key Points

- Size: 10 MW
- Fixed tilt racking
- Streets will be gated
- Fencing will be placed around the perimeter of the solar array
- Access for DTE and City of Detroit personnel only

Van Dyke / Lynch

Landscape Buffer Type



1. Evergreen 1 – Arborvitae
2. Evergreen 2 – Northern White Cedar
3. Evergreen 3 – Dwarf Blue Spruce
4. Pink Flowering – American Redbud
5. White Flowering – Serviceberry
6. Non-Flowering – Rising Fire American Hornbeam

For Illustration only; Final selection of trees based on availability



Fence Type

Decorative Ring



Ball Cap



Ground Cover



View in Spring



View in Summer



View in Fall



View in Winter

Manicured Meadow

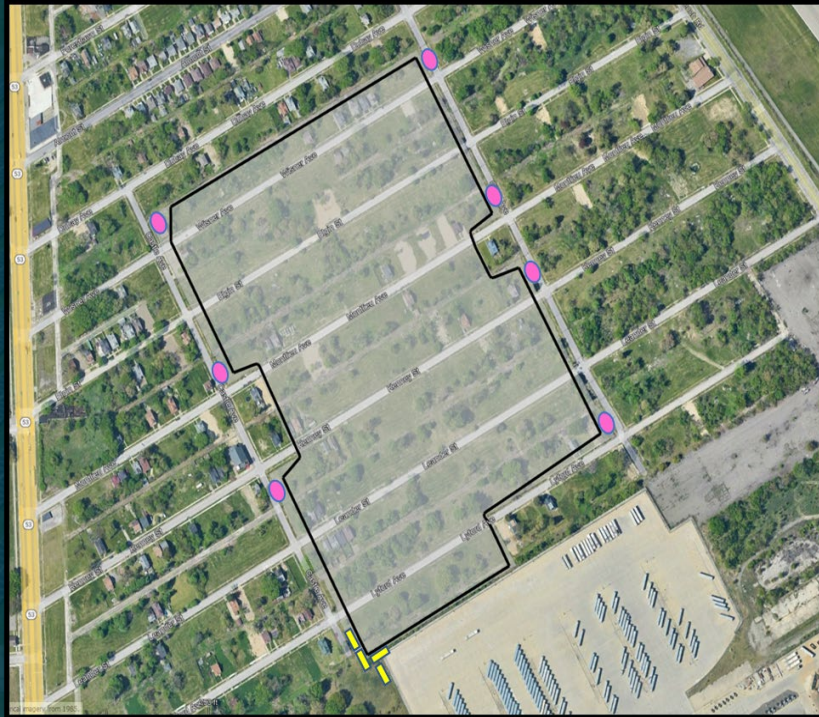


A low-growing meadow will be established alongside regional experts and will be managed throughout the life of the project.

This vegetation type provides better stormwater and soil retention, as well as provides space for grassland birds, native bees, and Monarch butterflies to flourish.

Some examples of plant species may include Golden Alexander, Showy Black-eyed Susan, Mountain Mint, and Heath Aster.

Garden Beds



DTE's Proposed Perennial Gardens:

- Place on prominent street corners
- Provides more vibrancy to overall project
- Corners are more visible from multiple directions

DTE's Proposed Raised Beds:

- Clustered near for easy maintenance and caretaking
- Location to be finalized with community representatives.



Solar Construction Timeline

Time frame*	Major Activity
May 2025	Demolition Completed
July 2025	Lease Agreement Signed
August – September 2025	Pre-construction mobilization (Tree removal, Silt Fence Installation)
September 2025 – October 2025	Fencing installation
October 2025 – December 2025	Overhead Powerline Removal
October 2025 – April 2026	Electrical Distribution Infrastructure
November 2025 – February 2026	Foundation and racking Installation
January 2026 – March 2026	Overhead Line Installation
March 2026 – May 2026	Panel installation
April 2026 – June 2026	Testing and Power Up
May 2026 – July 2026	Landscaping planting

- **Construction Hours: Monday-Saturday 7:00am to 5:30pm**
- **Construction is expected to start in September 2025 and end in May 2026.**
- **DTE will hold additional informational sessions during construction. These will be scheduled every quarter.**

*All timelines are estimates and are dependent on approvals and other variables.



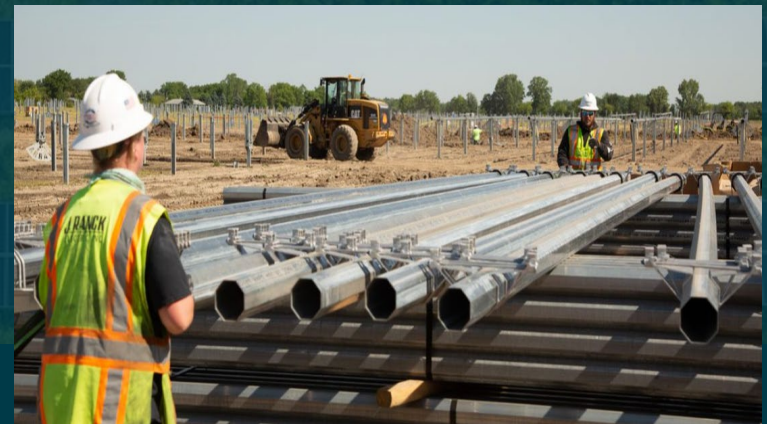
Construction Phase: Mobilization and Deliveries

DTE strives to make as little impact to the land and neighbors surrounding the project area as possible

- ❑ Ensuring proper sediment and erosion control measures are installed.
- ❑ DTE delivers construction materials in a time sequenced manner through pre-determined routes to minimize disturbance to nearby residents
- ❑ Materials delivered include support structure, wiring, solar modules and related components



For your safety, please use only designated roads. This is an active construction site.



Construction Phase: Installation Sequence

- ❑ Minimal earthwork and grading is expected due to the site being flat.
- ❑ Fence installation will start once the tree clearing activity is complete.
- ❑ Pile driven systems will be used for foundation. This minimizes ground disturbance and help maintain existing drainage.
- ❑ Posts are first driven into the ground. Racking is then installed at fixed tilt on top of these posts.
- ❑ Panels are then installed followed by underground cabling and other equipment such as inverters and transformers.
- ❑ Overhead powerlines will be installed to carry electricity to the Point of interconnection.



Transportation Plan



Road Closure Update



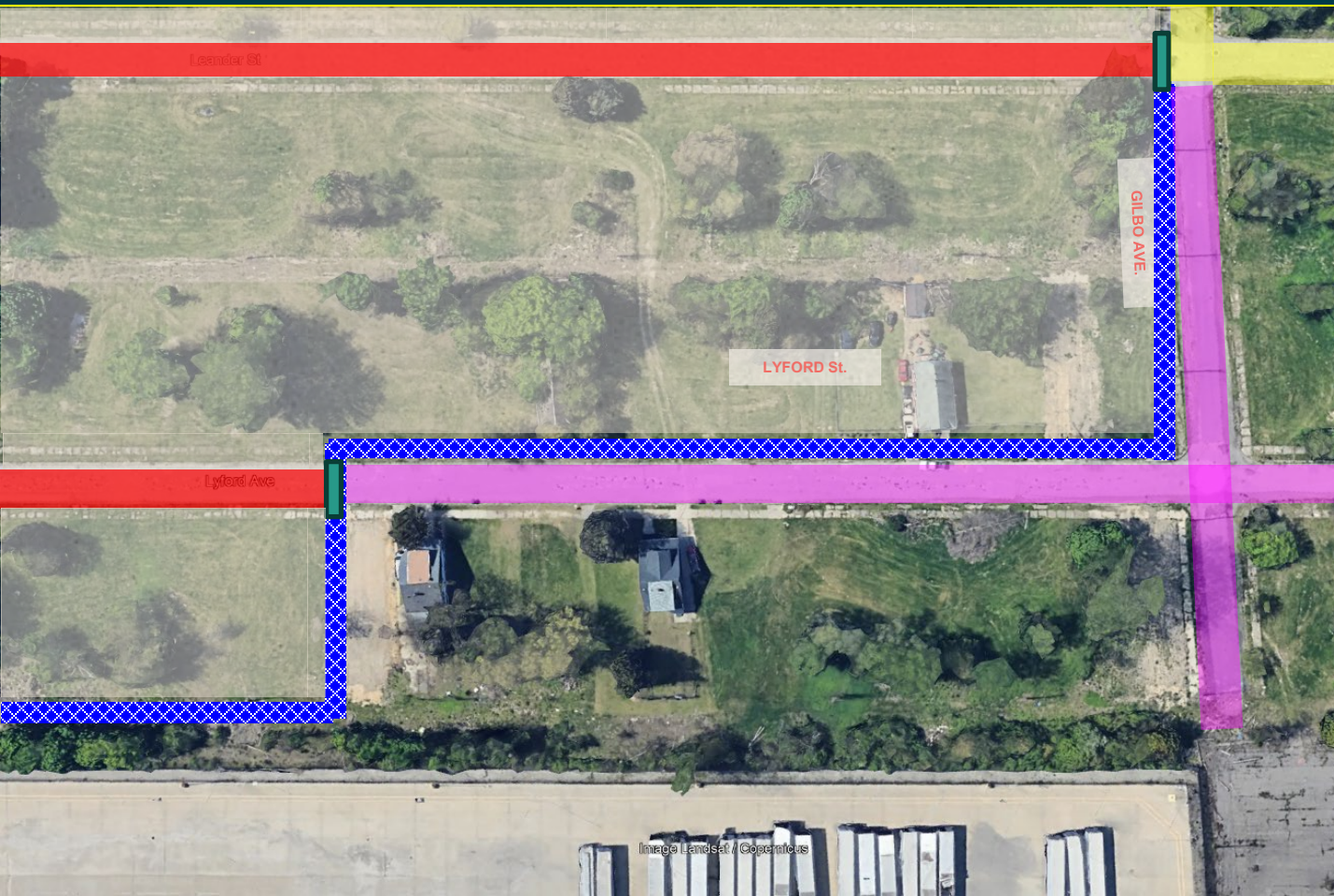
For your safety, please use only designated roads.
This is an active construction site.



TRAFFIC CIRCULATION

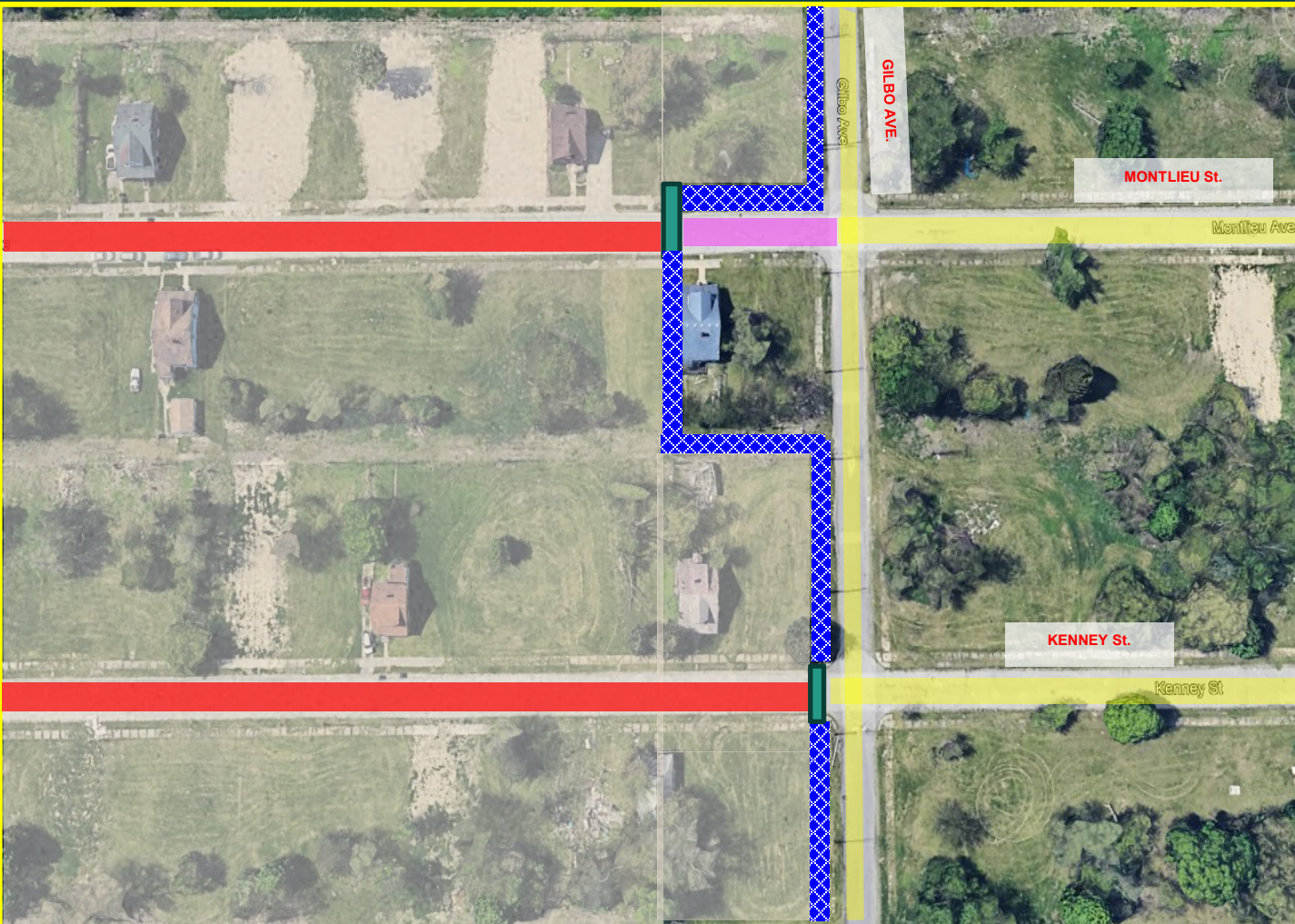


TRAFFIC CIRCULATION



-  PUBLIC STREETS
-  DEAD-END STREETS
-  FENCED STREETS

TRAFFIC CIRCULATION



PUBLIC STREETS

DEAD-END STREETS

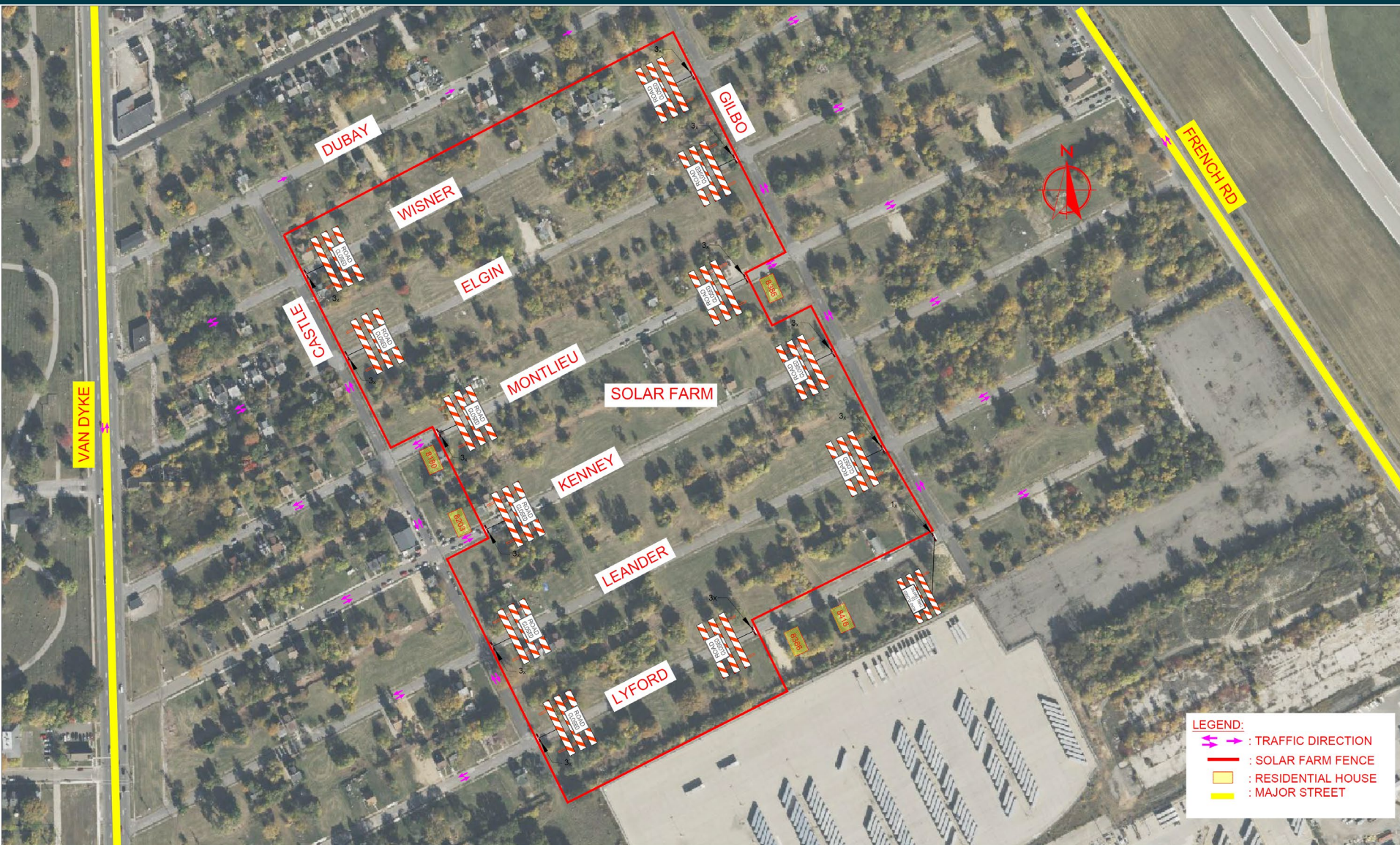
FENCED STREETS

TRAFFIC CIRCULATION

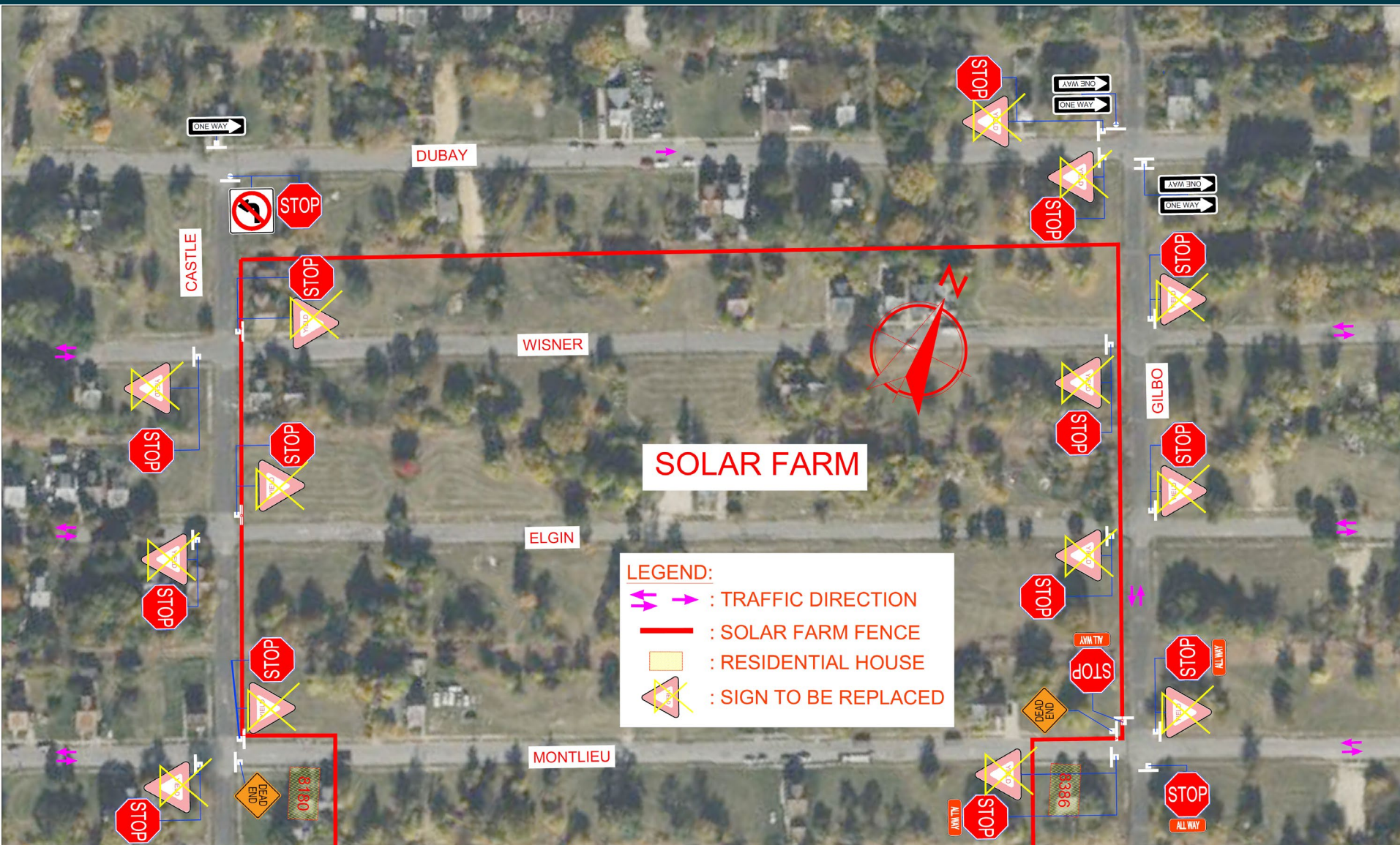


-  PUBLIC STREETS
-  DEAD-END STREETS
-  FENCED STREETS

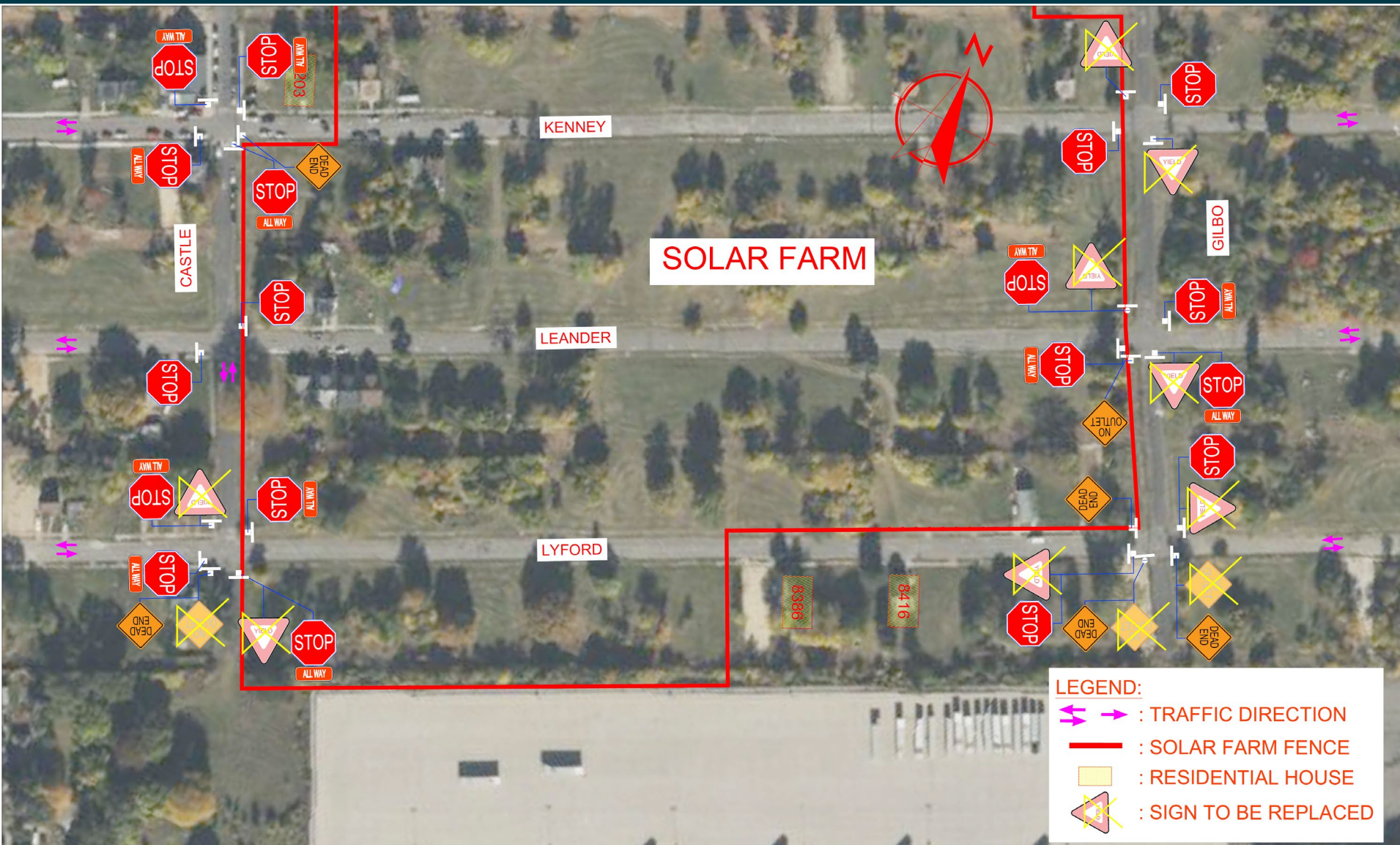
MAINTAINING OF TRAFFIC PLAN



SIGNAGE PLAN



SIGNAGE PLAN



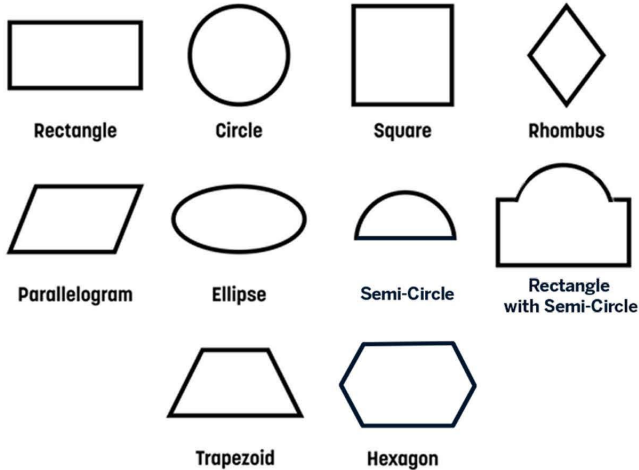
Coming Soon: Neighborhood Signs!



City of Detroit Neighborhood Signs Design Menu



Shape:



Font:

Aa

MONTERRAT
abcdefghijklmnopqrstuvwxyz
ABCDEFGHIJKLMNOPQRSTUVWXYZ
1234567890!@#\$%^&*()_+?

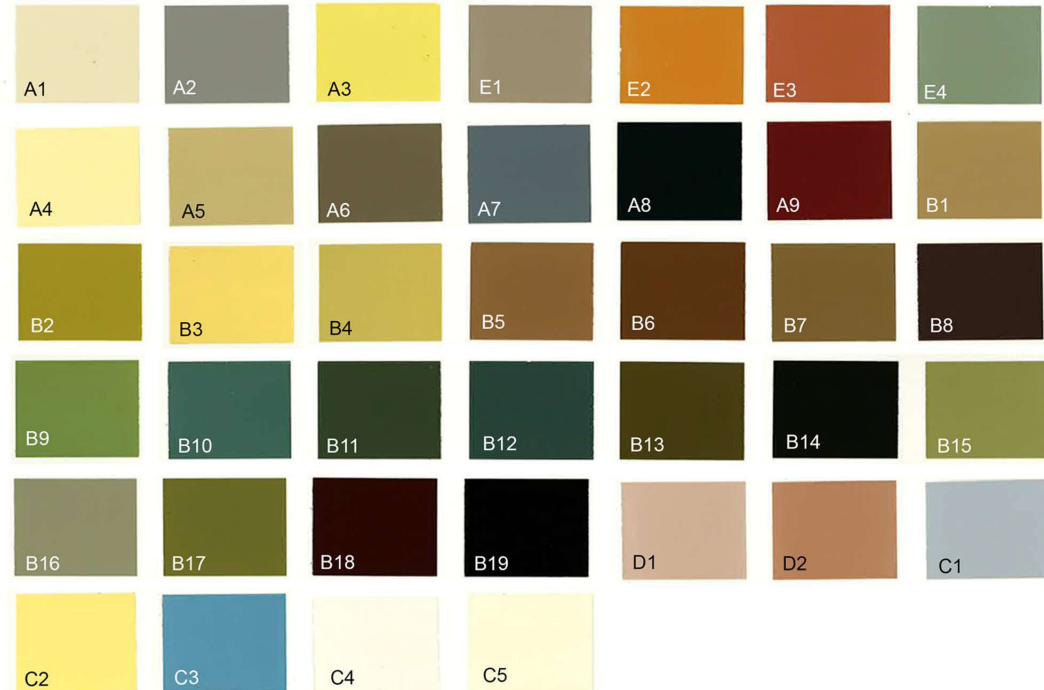
Aa

LORA
abcdefghijklmnopqrstuvwxyz
ABCDEFGHIJKLMNOPQRSTUVWXYZ
1234567890!@#\$%^&*()_+?

Aa

ROBOTO CONDENSED
abcdefghijklmnopqrstuvwxyz
ABCDEFGHIJKLMNOPQRSTUVWXYZ
1234567890!@#\$%^&*()_+?

Color:



There are a possible 270,725 unique outcomes from this menu

Solar Education Sign Ideas



Take the Survey Now



Solar Neighborhood Signs- Design Survey

Congratulations! Your neighborhood has been selected to receive (1) neighborhood sign and (1) solar education sign. Please fill out this form to indicate your design preferences. We will tally the results and the choices with the highest number of votes will win!

* Indicates required question

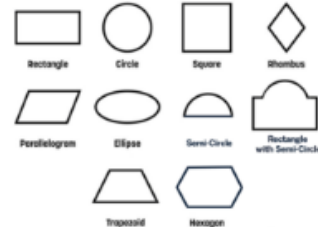
Select your Solar Neighborhood

Choose ▼

City of Detroit Neighborhood Signs Design Menu



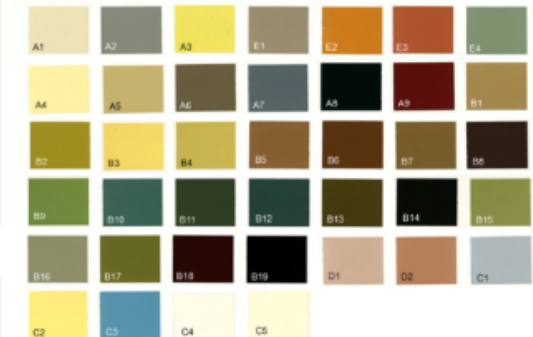
Shape:



Font:



Color:



DTE Contact Information

Contact us

Please email detroitssolar@dteenergy.com with any questions or concerns

Other Useful Links

<https://empoweringmichigan.com/city-of-detroit-van-dyke-lynch-solar-neighborhood-project/>

<https://empoweringmichigan.com/tree-trim-academy/>

<https://empoweringmichigan.com/energy-efficiency/>

<https://www.detroitk12.org/RandolphCTC>



Questions?



THANK YOU!



SOLAR TEAM

Trisha Stein

Mayor's Office

steint@detroitmi.gov

(313) 224-3400

Erinn Harris

Department of Neighborhoods

harriser@detroitmi.gov

(313) 224-4592

Tepfirah Rushdan

Office of Sustainability

tepfirah.rushdan@detroitmi.gov

Sarah Patton

Mayor's Office

sarah.patton@detroitmi.gov

Jennifer Pasha

Department of Neighborhoods

Jennifer.Pasha@detroitmi.gov

(313) 425-6123