

Castle Solar Park

CONSTRUCTION UPDATE MEETING

VAN DYKE LYNCH

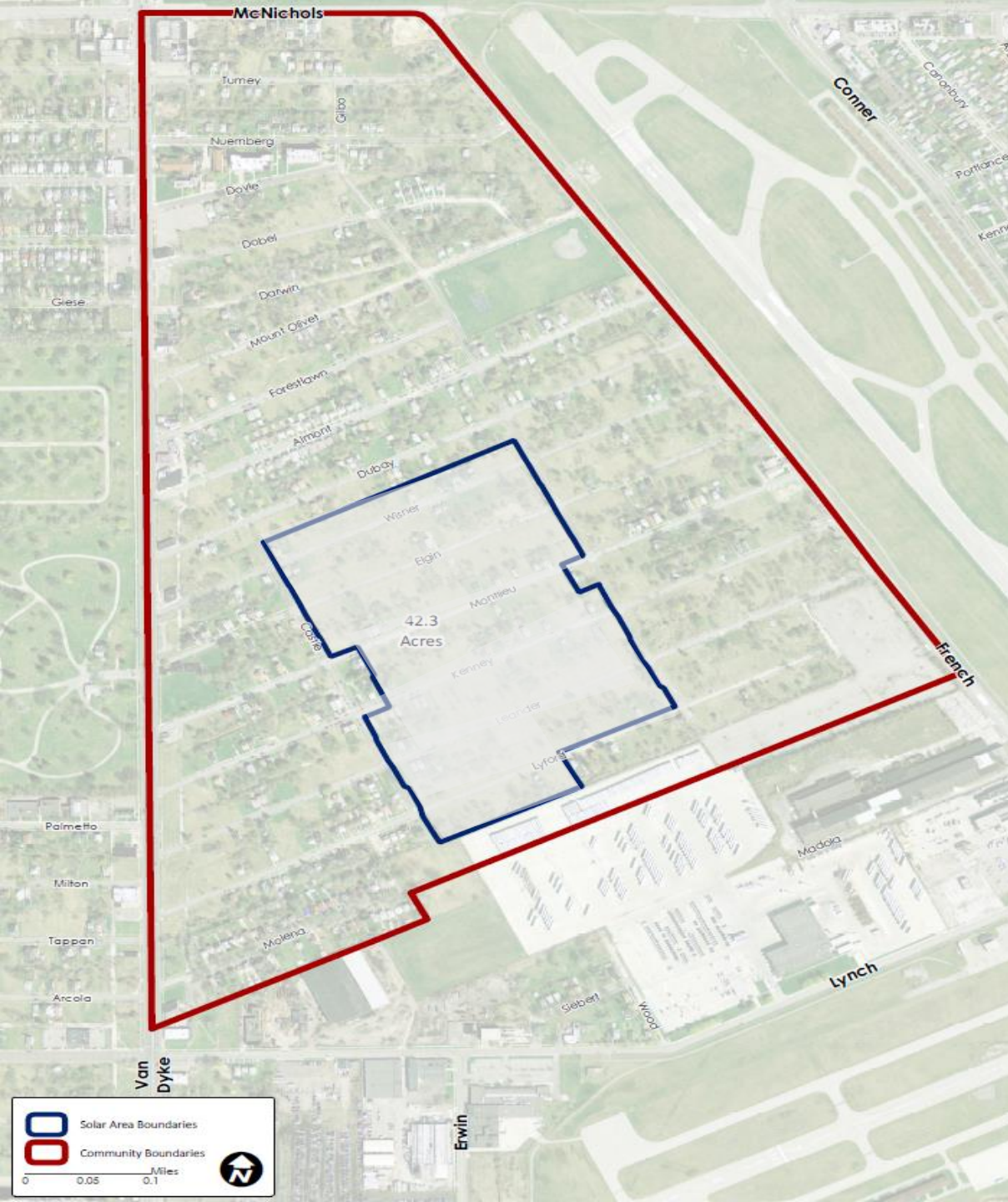
Monday, January 5, 2025 | 6:00p



AGENDA

- Welcome/Introductions
- Construction Progress
- Next Step in Construction
- Road Closure and Other Street Information
- Energy Efficiency Upgrades
- Coming Soon Signage, Plantings
- Questions





Key Points

- Size: 10 MW
- Fixed tilt racking
- Streets will be gated
- Fencing will be placed around the perimeter of the solar array
- Access for DTE and City of Detroit personnel only

Clearing the Site – BEFORE

Clean up
completed
10/16/25



Brush Clearing

Tree and brush clearing completed 10/16/25



Fence installation

Fence installation began 9/25/25



Fencing Installed, Interior Poles Removed, Trailers on Site

Overhead assets removed
inside site completed 12/8/25

Fencing will be 100% complete by
early February



Solar Construction Timeline

Time frame*	Major Activity
December 2025 – May 2026	Foundation and racking Installation
January 2026 – March 2026	Overhead Line Installation
April 2026 – June 2026	Panel installation
May 2026 – July 2026	Landscape Planting
July 2026 – August 2026	Testing and Power up



For your safety, please use only designated roads. This is an active construction site.



*All timelines are estimates and are dependent on approvals and other variables.

Construction Phase: Installation Sequence

- ❑ Pile driven systems will be used for foundation. This minimizes ground disturbance and help maintain existing drainage.
- ❑ Posts are first driven into the ground. Racking is then installed at fixed tilt on top of these posts.
- ❑ Panels are then installed followed by underground cabling and other equipment such as inverters and transformers.
- ❑ Overhead powerlines will be installed to carry electricity to the point of interconnection.



Pile driving equipment on site at VDL

Installing the Panel Supports

<https://youtu.be/2XDYa4UaPrk?si=US47Ihi4Ik01DNPw>

START Wed Jan 7
8:00am-5:30pm, M-Th

END Early April 2026



Construction Traffic




Traffic Circulation



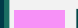
LEGEND

 SOLAR FARM

 SOLAR FARM FENCE

 EXISTING HOME (TYP)

 PUBLIC STREETS

 DEAD-END STREETS

 FENCED STREETS

Google Maps and Rideshare

- Google Maps has been updated to show streets as closed
- Apple Maps updates in progress
- Rideshare should reflect mapping changes



Road Closure Signs

Detour signs
will be
added along
Castle and
Gilbo



Trash Collection and Emergency Access

- Trash contractor (Priority Waste) has been updated and they should be servicing all residents
 - Missed service should be reported to (313) 876-0004
- DPD, DFD, and EMS access preserved to site along Gilbo and Castle



Energy Efficiency Upgrades

Project Status (61 total homes)

- Number of Homes Completed: 43
- Number of Homes In-Progress: 18
- Estimated Completion Dates: End of January

Energy Efficiency Measures Completed

- Attic Insulation
- Air Sealing
- Furnaces
- Water Heaters
- Roof Replacement

Life-Saving Impact

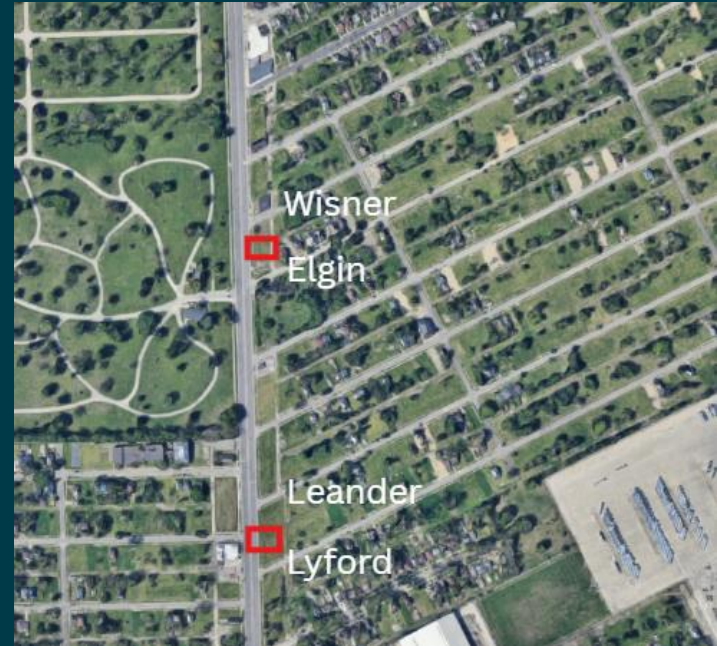
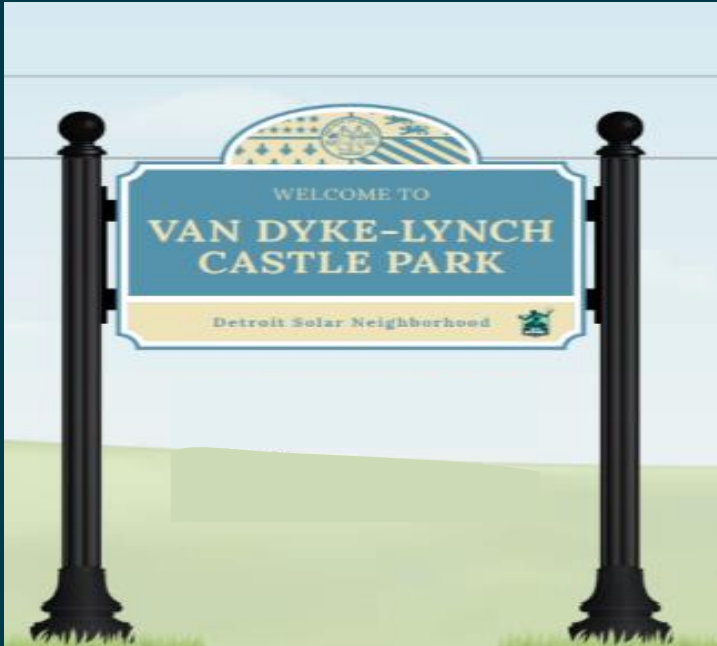
- Carbon Monoxide (CO) detection saved lives.
- Fire Department intervention saved two grandparents and children.

Energy Savings

- Residents have reported reductions in energy bills

Coming Soon: Neighborhood Signage

General Services Department will install one, 2-sided neighborhood sign in Spring that will be 48 x 36. Map below displays location options



Solar educational signs coming soon as well!



Coming Late Spring: Plantings - Buffer



1. Evergreen 1 – Arborvitae
2. Evergreen 2 – Northern White Cedar
3. Evergreen 3 – Dwarf Blue Spruce
4. Pink Flowering – American Redbud
5. White Flowering – Serviceberry
6. Non-Flowering – Rising Fire American Hornbeam



For Illustration only; Final selection of trees based on availability

Coming Late Spring Plantings – Buffer, continued



View in Spring



View in Summer



View in Fall



View in Winter

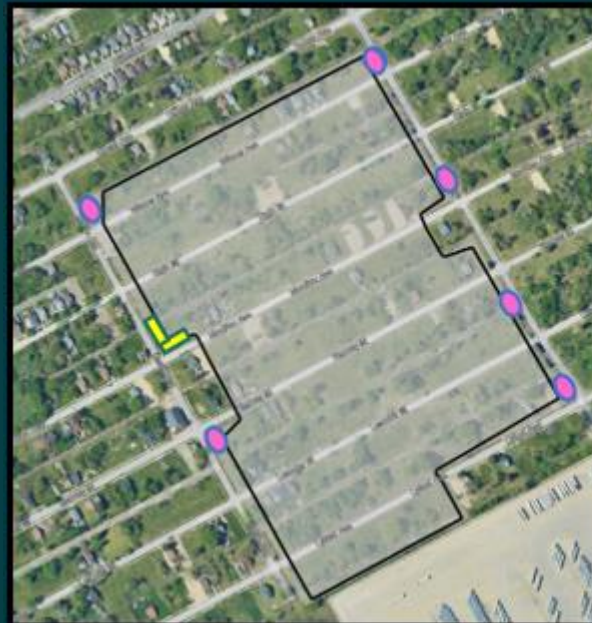


Manicured Meadow

A low-growing meadow will be established alongside regional experts and will be managed throughout the life of the project.

This vegetation type provides better stormwater and soil retention, as well as provides space for grassland birds, native bees, and Monarch butterflies to flourish.

Some examples of plant species may include Golden Alexander, Showy Black-eyed Susan, Mountain Mint, and Heath Aster.



DTE's Proposed Perennial Gardens:

- Place on prominent street corners
- Provides more vibrancy to overall project
- Corners are more visible from multiple directions

DTE's Proposed Raised Beds:

DTE is working on locations and proposal with Office of Sustainability – stay tuned!

DTE Contact Information

Contact us

Please email detroitssolar@dteenergy.com with any questions or concerns.

Other Useful Links

<https://empoweringmichigan.com/city-of-detroit-van-dyke-lynch-solar-neighborhood-project/>

<https://empoweringmichigan.com/tree-trim-academy/>

<https://empoweringmichigan.com/energy-efficiency/>

<https://www.detroitk12.org/RandolphCTC>



Questions?



THANK YOU!



SOLAR TEAM

Trisha Stein

Mayor's Office

steint@detroitmi.gov

(313) 224-3400

Kayana Sessoms

Department of Neighborhoods

sessomsk@detroitmi.gov

Tepfirah Rushdan

Office of Sustainability

tepfirah.rushdan@detroitmi.gov

Sarah Patton

Mayor's Office

sarah.patton@detroitmi.gov

Jennifer Pasha

Department of Neighborhoods

Jennifer.Pasha@detroitmi.gov

(313) 425-6123