



2024 SUSTAINABILITY HIGHLIGHTS

At Beacon Park, we believe environmental responsibility and sustainability are key for a thriving, healthy community. Each year, we focus on environmentally centered, accessible and sustainable practices through waste reduction and the use of onsite resources to create a greener future.

OUR SUSTAINABILITY PRIORITIES:

- Community Awareness & Education
- Environment
- Green Infrastructure
- Transportation Access
- Trees & Vegetations
- Waste Management

Environment

Beacon Park actively engages in environmental responsibility through its design and onsite assets to provide the community and visitors with a sustainable, public green space. Check out the sustainability accomplishments from 2024:



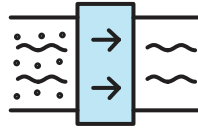
1.43 tons
of waste recycled by park visitors
and Lumen Detroit guests



41 trees
on site capturing 1,500
pounds of CO₂ annually



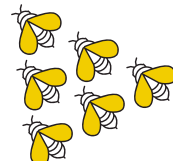
4
electric vehicle
charging stations
nearby



4 bioswales
help filter pollutants and
reduce stormwater runoff



4
recycling
stations



Greenery and flowers
onsite act as a
bee sanctuary



Lumen Detroit was established and built as a
Leadership in Energy & Environmental Design (LEED)
Silver Certified building.

3,400 sq. ft. 

green roof that reduces
surface runoff by 24% and
holds 3 inches of rainwater

Serves sustainably sourced
**select beer,
spirits and
menu items**



Accessibility & Connectivity

Beacon Park serves as a central destination to help residents and visitors connect with other downtown locations, while helping reduce the local carbon footprint.



Located near
2 bus
lines
connecting visitors to
local attractions



10-minute
walk to QLine and bike stations,
Rosa Parks Transit Center



Nearby bike lanes and
20+
bike racks on-site



2 square
miles
away from destinations like
the Comerica Park, Ford Field
and the Huntington Place