

MIGreenPower
Community Impact Pilot

MIGreenPower Community Impact Pilot

Community Partner Discussion

August 4, 2022

In collaboration with:





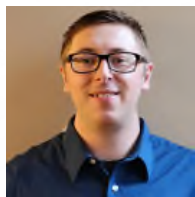
MI GreenPower
Community Impact Pilot

Agenda

- Introductions
- Pilot Overview
- Community Partner Input
- Discussion

Introductions

MIGreenPower Community Impact Solar Council



Cody Matthews

MPSC Representative
Public Utilities Engineer Specialist
MPSC



Lindsay Wold

DTE Representative
Marketing Analyst, Renewable
Solutions Product Development
DTE Energy



Cherish Smith

Subject Matter Expert
Representative
Director
Guidehouse



Will Kenworthy

Non-Profit Representative
Regional Director, Midwest
Vote Solar



Kelsey Tremberth

DTE Supporting Representative
Principal Supervisor, Renewable
Solutions Product Development
DTE Energy



Sahil Popli

Subject Matter Expert
Supporting Member
Associate Director
Guidehouse



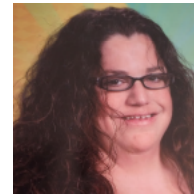
Janis Hazel

Community Representative
Detroit



Juan Shannon

Community Representative
Highland Park



Heather Johnson

Community Representative
River Rouge

Pilot Overview

MIGreenPower Community Impact Pilot Overview

DTE Energy (DTE) is committed to doing its part to address climate change and is working with stakeholders to help decarbonize our state's economy. With a goal of achieving net zero carbon emissions by 2050, DTE is focused on bringing significantly more clean energy onto the grid, investing in universal scale wind and solar projects that are creating a cleaner Michigan for all Michiganders.



1

As a result of conversations with community stakeholder groups, DTE has now embarked on an ambitious pilot to bring community solar projects to three communities in their service territory: Detroit, Highland Park and River Rouge. DTE will provide 30% of the funding for the pilot, and the remaining funding will come from third party contributions.



2

Randomly selected income-qualified residents¹ (persons who are at or below 200% of the federal poverty level) for each of the projects will be subscribed to 100% renewable energy for their place of living and will also receive an associated bill credit (between \$30-\$35 each month), which will lower their monthly bill. To further enable bill savings, two of the projects will include energy efficiency initiatives for selected participants.



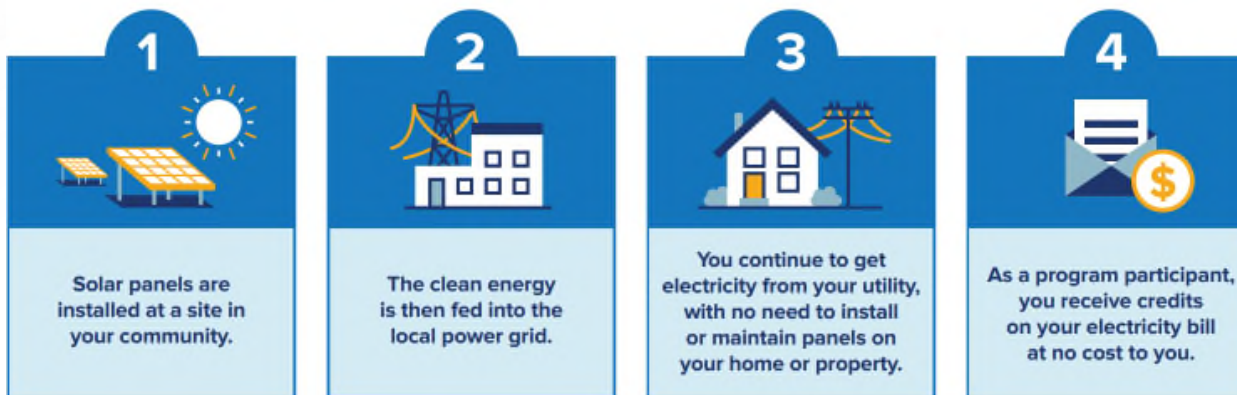
3

The MIGreenPower Community Impact Solar Council (Solar Council) is responsible for leading pilot planning and implementation and includes one representative from DTE, a non-profit organization, a subject matter expert (SME), the Michigan Public Service Commission (MPSC) staff and one community representative from each pilot city.

1. The number of individuals that can participate from each community is dependent on land availability, the size of the solar array, and funds raised.

Community Solar Overview

Community solar refers to local solar facilities shared by multiple community subscribers who receive credit on their electricity bills for their share of the power produced.



IMPROVED ACCESS

Community solar works for anyone with an electric bill, including renters, residents in multi-unit buildings, municipalities, non-profits and businesses that do not own their roofs. That means that community solar can improve access to renewable sources.

FAVORABLE ECONOMICS

Sunshine is free, which means solar offers reliable energy at a predictable rate for decades. And because community solar projects are optimally sited, professionally maintained, and built at scale, consumers can be assured that projects are cost-effective.

IT'S EASY

Customers can sign up to participate in a community solar project in a few minutes and begin receiving power production credits on their next utility bill. No contractor visits, permits, or maintenance means no hassle.

IT'S MOBILE

Community solar allows customers to move within the utility territory and still retain their participation in the community solar project, making it an easy, portable energy solution.

UTILITY PARTNERSHIPS

The community solar model is based on a mutually beneficial relationship with utilities, allowing them to provide a product their customers want—locally-made clean energy.

Sources:

1. [NYSERDA-Solar for All](#) (Image Source)
2. [Coalition for Community Solar Access](#)

Approach

The Solar Council has created an integrated approach to implement the MIGreenPower Community Impact Pilot, which includes partnerships with Michigan Public Service Commission, and various local public and private organizations.



Objective. The MIGreenPower Community Impact Pilot aims to connect income-qualifying customers in select communities with sustainable solar resources.



Scope. The pilot is focused on bringing community solar projects to three communities in Michigan: Detroit, Highland Park, and River Rouge.



Leadership. The Solar Council is responsible for engaging with the three pilot cities, fundraising, soliciting potential project locations, setting criteria, and reviewing projects.

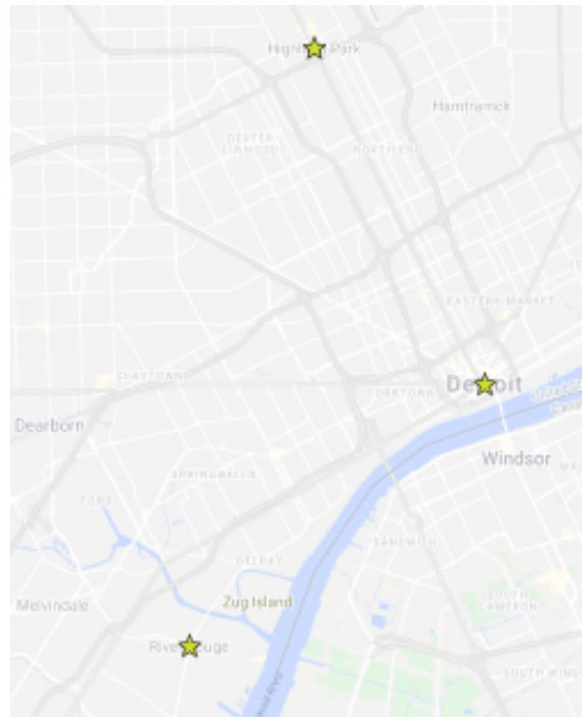
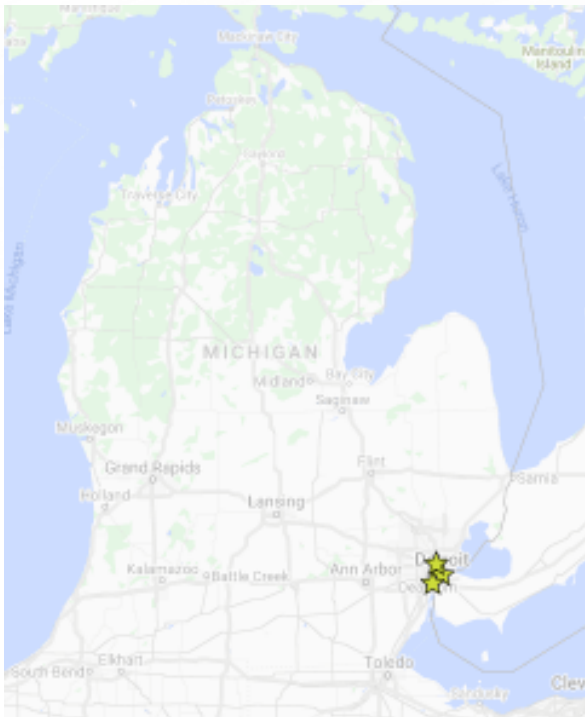
Key Milestones



Note: Actual timeline will vary based on fundraising, and implementation will occur as soon as possible after project funds have been raised.

Project Location

The solar arrays will be located in Detroit, River Rouge and Highland Park. Specific sites for the projects have not yet been determined.



- The number of individuals that can participate from each city is dependent on the size of the community solar array.
- DTE and the Low-Income Solar Council will work together to determine the methodology for selecting individuals to participate in the pilot.

Community Partner Input

Potential Partners

A summary of few *potential* community and fundraising organizations and partners for the MIGreenPower Community Impact Pilot.

Bridging Communities / Honnold Foundation	CLEARCorps	Detroit Future City	Detroiters Working for Environmental Justice	Eastside Community Network	EcoWorks
Elevate	Friends of the Rouge	Global Detroit	Ryder Cooperative Industries	Soulardarity	Southwest Detroit Environmental Vision (SDEV)
The Greening of Detroit	United Community Housing Coalition	Kresge Foundation	Energy Foundation	City of Detroit	City of Highland Park
City of River Rouge		Local religious institutions	And many more....		

Opportunities for Community Input and Support

There are several critical components requiring early and consistent community engagement, including integrating Community Representatives to the Solar Council, identifying sites, and project selection.



1 >

Community Representatives on the Solar Council.

Three Community Representatives, one from each of the pilot site locations, serve as voting members of the Solar Council and are key leaders in engaging community members, organizations, religious institutions, and action networks.



2 >

Site Selection.

Locations for the solar arrays in each of the three neighborhoods must meet specific, technical and legal requirements. Once potential feasible locations are determined, they will be shared with community members for feedback and input. DTE will make final site selection based on this input.



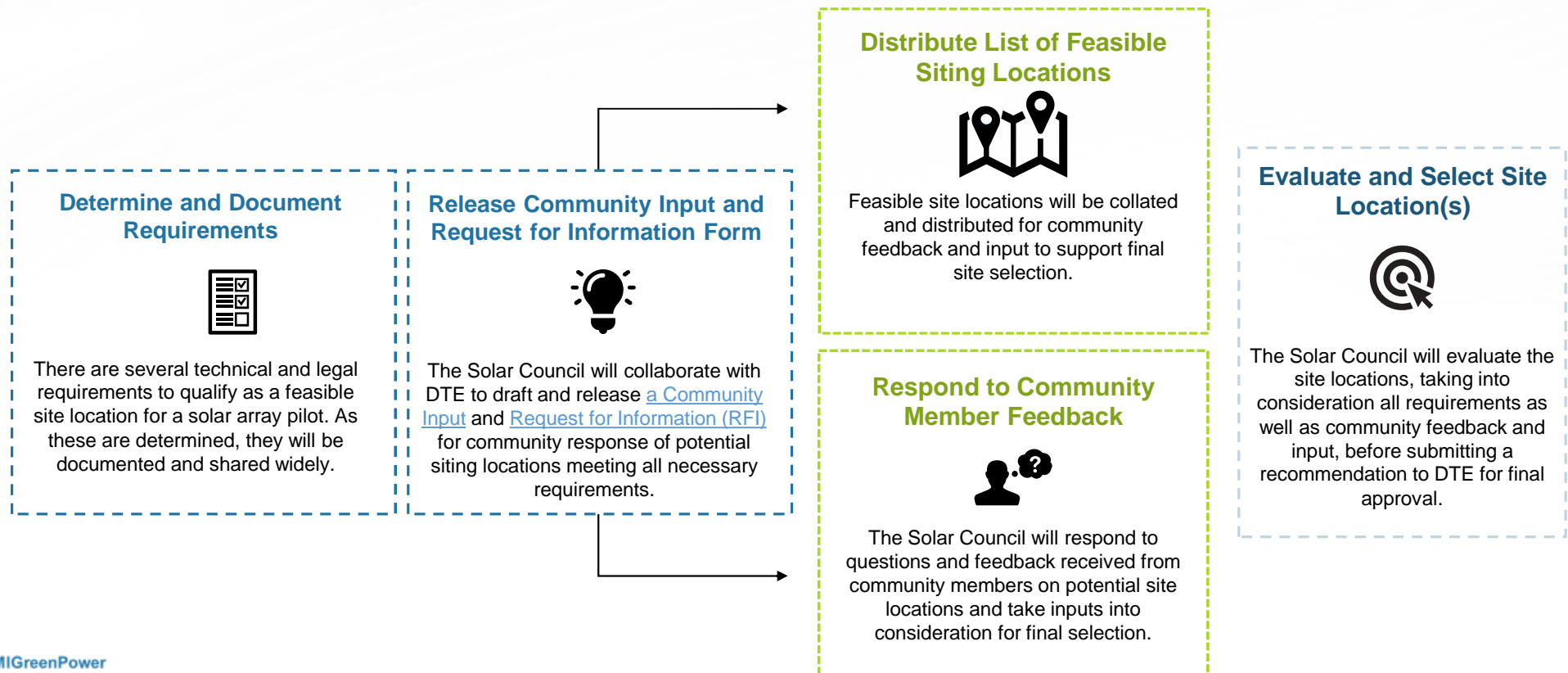
3 >

Project Selection.

Community Members will be regularly engaged to provide input on a variety of pilot program items, including fundraising, project selections, clarity of eligibility for subscription to community solar resources, and process improvement on communications.

Identifying Potential Site Locations

Community Inputs are essential to determine the site location for Community Solar arrays.



Community Input Form & Request For Information

Following online forms will seek community response of potential siting locations meeting all necessary requirements.



Community Input Form

Due: Oct 7th, 2022

Audience: General Public (targeting residents from Detroit, Highland Park and River Rouge)

Key Inputs:

- Contact Details
 - Name
 - Phone number
 - Email
- Site details
 - Address
 - Approximate acreage
 - Owner and current land use
- Additional feedback on site location or pilot



Request for Information Form

Due: Oct 7th, 2022

Audience: Landowners and Developers

Key Inputs:

- Contact Details
 - Name
 - Phone number
 - Email
- Site details
 - Address
 - Parcel number
 - Approximate acreage
 - Owner and current land use
- Additional feedback on site location

Discussion

Discussion Topics



What overall questions do you have on the **MIGreenPower Community Impact Pilot objectives and approach**?



How can you best support us in **identifying potential sites in each of the communities** and sharing information on the MIGreenPower Community Impact Pilot?



Are there any **additional community or fundraising organizations** we should include in our outreach as potential partners?



How can we **work together** to ensure the **MIGreenPower Community Impact Pilot is successful**?

Contact

If you are interested in learning more about the pilot or expressing your support, please send an email to MIGPCommunity@dteenergy.com.

MI GreenPower
Community Impact Pilot



Additional Resources

Additional Resources

- [MIGreenPower Community Impact Blog](#)
- [DTE Low-Income Solar Settlement Agreement](#)
- [DTE Low-Income Solar Memorandum of Understanding](#)
- Insert link for brochure/one-pager

Selection Criteria

Council will consider the following criteria while evaluating the solar array site locations.

Attribute	Criteria
Site Size	1.25-7 acres (250KW-1MW)
Buildability	Environment, topography, land use, shading; land is contiguous
Property control	Landowner is willing to sell land to DTE or enter a lease or easement on terms mutually agreeable
Technical	Proximity to distribution lines; systems can be electrically connected
Other	Community support including governing municipality; compliance with applicable local ordinance(s)