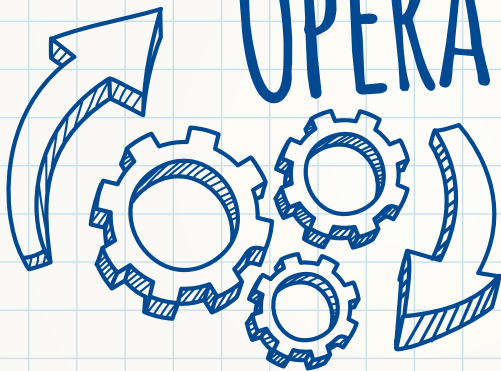




**DTE Energy®**

# POWER PLANT OPERATOR



- ✓ **Make sure customers have enough electricity or gas to meet their needs.**
- ✓ **Monitors, inspects equipment**
- ✓ **Adjust controls for electricity, gas flow between stations and substations**



## SOME JOB REQUIREMENTS:

High School diploma and/or post-secondary education

Pass an employment test



THE AVERAGE WAGE:  
\* without overtime

**\$62,000**



## THESE CLASSES WILL HELP YOU PREPARE FOR THIS POSITION:

English/Language Arts I-IV

Algebra I and II

Geometry

Trigonometry

Earth or Environmental Sciences

Biology and Chemistry

Physics

State, U.S. and World History

Post-High School Education and Training



**POWER PLANT OPERATOR**

## FIND OUT MORE AT:

[getintoenergy.com/youth/videos.php](http://getintoenergy.com/youth/videos.php)



**DTE Energy®**

# OVERHEAD LINEWORKER



- ☒ Use safety equipment
- ☒ Install and repair wires and other equipment typically seen on electrical poles and transmission towers.
- ☒ Climb poles or bucket trucks to reach work area
- ☒ Identify defective equipment
- ☒ Inspect, test power lines



## SOME JOB REQUIREMENTS:

High School diploma and/or post-secondary education

Physical assessment

Pass an employment test



THE AVERAGE WAGE:  
\* without overtime

**\$63,000**



THESE CLASSES WILL HELP YOU  
PREPARE FOR THIS POSITION:

English/Language Arts I-IV

Algebra I and II

Geometry

Trigonometry

Earth or Environmental Sciences

Biology and Chemistry

Physics

State, U.S. and World History

Post-High School Education  
and Training



OVERHEAD  
LINE WORKER

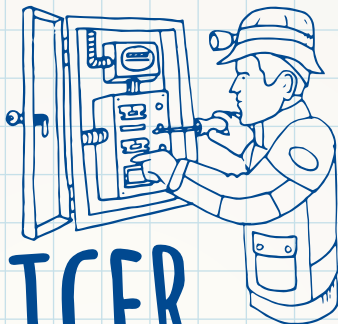
FIND OUT MORE AT:

[getintoenergy.com/youth/videos.php](http://getintoenergy.com/youth/videos.php)



**DTE Energy®**

# CABLE SPLICER



- ✓ Use safety equipment
- ✓ Install and repair cables and other equipment typically seen on electrical poles and transmission towers.
- ✓ Climb poles or bucket trucks to reach work area
- ✓ Identify defective equipment
- ✓ Inspect, test power lines
- ✓ Lay underground cables



## SOME JOB REQUIREMENTS:

High School diploma and/or post-secondary education

Physical assessment

Commercial Driving License

Pass an employment test



## THE AVERAGE WAGE:

\* without overtime

**\$63,000**



## THESE CLASSES WILL HELP YOU PREPARE FOR THIS POSITION:

English/Language Arts I-IV

Algebra I and II

Geometry

Trigonometry

Earth or Environmental Sciences

Biology and Chemistry

Physics

State, U.S. and World History

Post-High School Education and Training



CABLE  
SPLICER

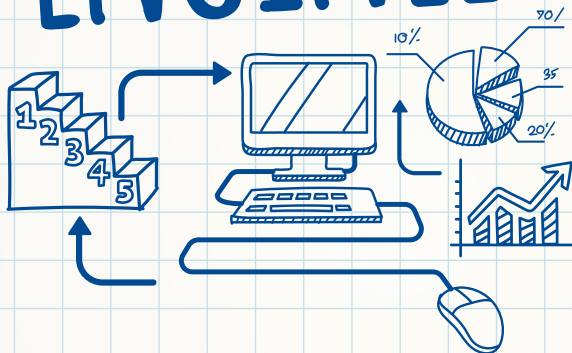
## FIND OUT MORE AT:

[getintoenergy.com/youth/videos.php](http://getintoenergy.com/youth/videos.php)



**DTE Energy®**

# ENGINEER



- ✓ Are problem solvers
- ✓ Determine how systems should work in various conditions
- ✓ Plan, predict for how things will change going forward
- ✓ Seek out fresh, new ideas to improve



## SOME JOB REQUIREMENTS:

Four-year degree

Interested in being an engineer?  
Speak to a counselor about how  
to prepare for this college program.



THE AVERAGE WAGE:  
\* without overtime

**\$81,000**



## DTE HIRES MANY TYPES OF ENGINEERS, INCLUDING:

- Electric or power engineers
- Mechanical engineers
- Nuclear engineers
- Civil engineers
- Chemical engineers



ENGINEER

## FIND OUT MORE AT:

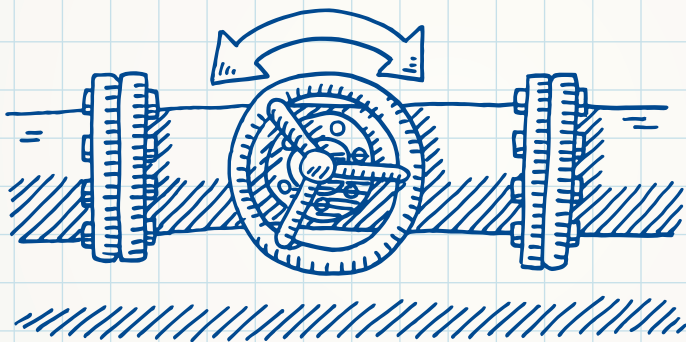
[getintoenergy.com/youth/videos.php](http://getintoenergy.com/youth/videos.php)





**DTE Energy®**

# PIPEFITTER



Lay out pipe routes



Cut, connect pipes



Position pipes for welding, sealing



## SOME JOB REQUIREMENTS:

High School diploma and/or post-secondary education  
Physical assessment  
Pass an employment test



THE AVERAGE WAGE:  
\* without overtime

**\$60,000**



## THESE CLASSES WILL HELP YOU PREPARE FOR THIS POSITION:

English/Language Arts I-IV

Algebra I and II

Geometry

Trigonometry

Earth or Environmental Sciences

Biology and Chemistry

Physics

State, U.S. and World History

Post-High School Education and Training



PIPEFITTER

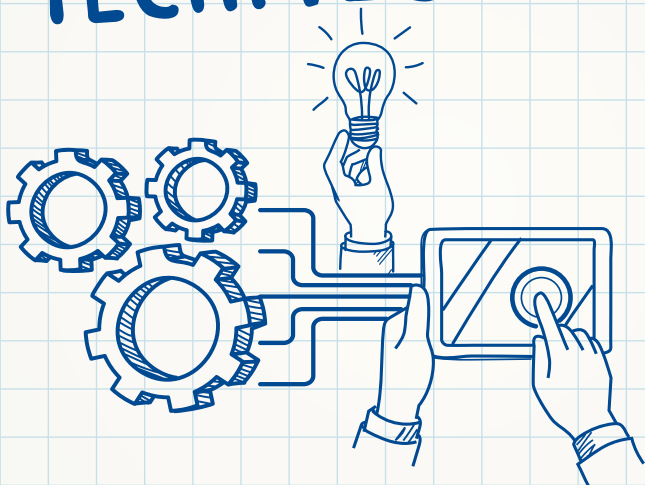
## FIND OUT MORE AT:

[getintoenergy.com/youth/videos.php](http://getintoenergy.com/youth/videos.php)



**DTE Energy®**

# TECHNICIAN



- ✓ Inspect motors, belts, fluids, filters, etc.
- ✓ Take apart, repair machines
- ✓ Preventive maintenance on equipment



## SOME JOB REQUIREMENTS:

High School diploma and/or post-secondary education

Physical assessment

Pass an employment test



THE AVERAGE WAGE:  
\* without overtime

**\$61,000**



## THESE CLASSES WILL HELP YOU PREPARE FOR THIS POSITION:

English/Language Arts I-IV

Algebra I and II

Geometry

Trigonometry

Earth or Environmental Sciences

Biology and Chemistry

Physics

State, U.S. and World History

Post-High School Education  
and Training



**TECHNICIAN**

FIND OUT MORE AT:

[getintoenergy.com/youth/videos.php](http://getintoenergy.com/youth/videos.php)