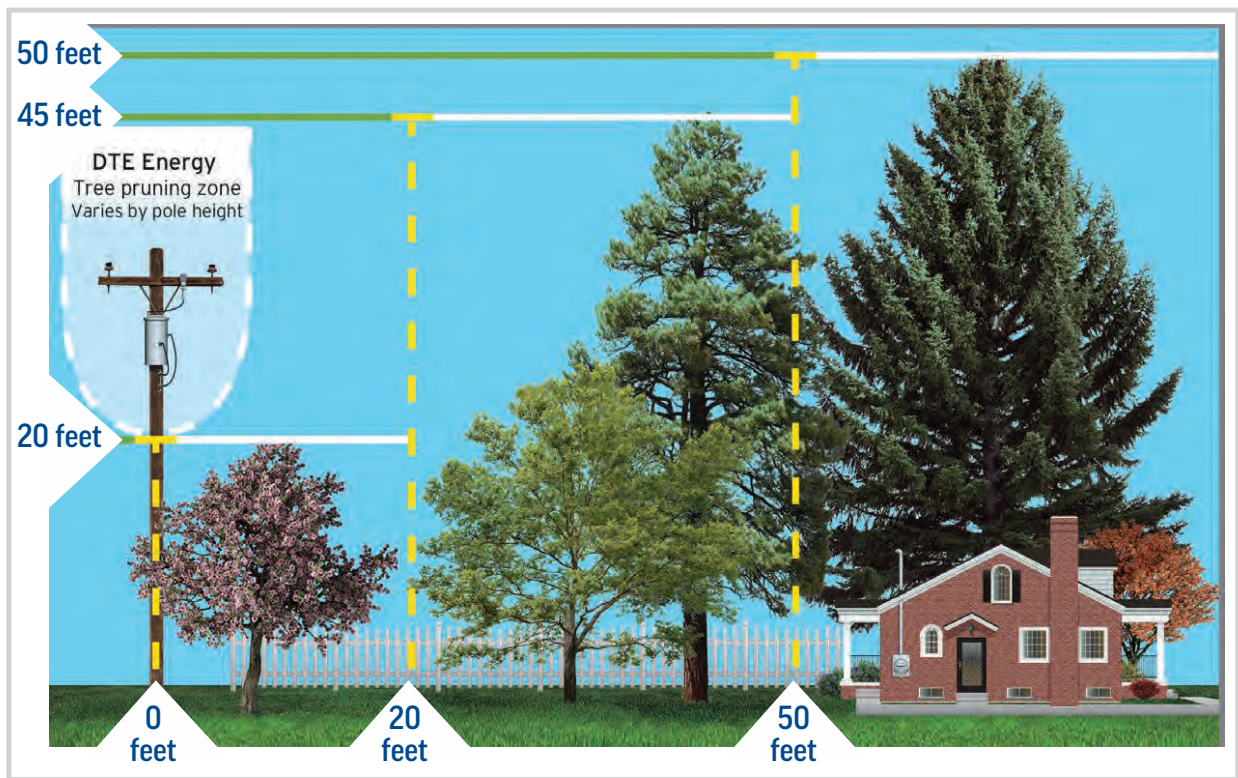


# Plant the right tree in the right place

At DTE, we appreciate the natural beauty trees bring to the communities where we live and serve, but we also know they're responsible for nearly 70 percent of the time our customers spend without power. That's why we put together some recommendations to help you plant trees that beautify your property and promote electric safety and reliability for your family and neighbors.



## Tree planting recommendations

Trees that will not grow more than 20 feet tall can be planted beneath power lines.

Trees that will grow between 21 and 45 feet tall should be planted 20 to 50 feet away from power lines.

Trees that will grow 46 feet tall (or taller) should be planted more than 50 feet away from power lines.

**WARNING:** Do not attempt to trim trees near power lines, including your service drop – your home's high-voltage connection to the energy grid. Power lines are extremely dangerous and can be deadly. Contact a professional tree-trimming company to perform this work. Doing so could save lives.

**DTE**