

# Distribution Investment and Maintenance Framework

This investment encompasses many technical projects that can be defined and simplified by four key pillars:

## Tree Trimming

» Tree trimming across 31,000 miles of overhead power lines

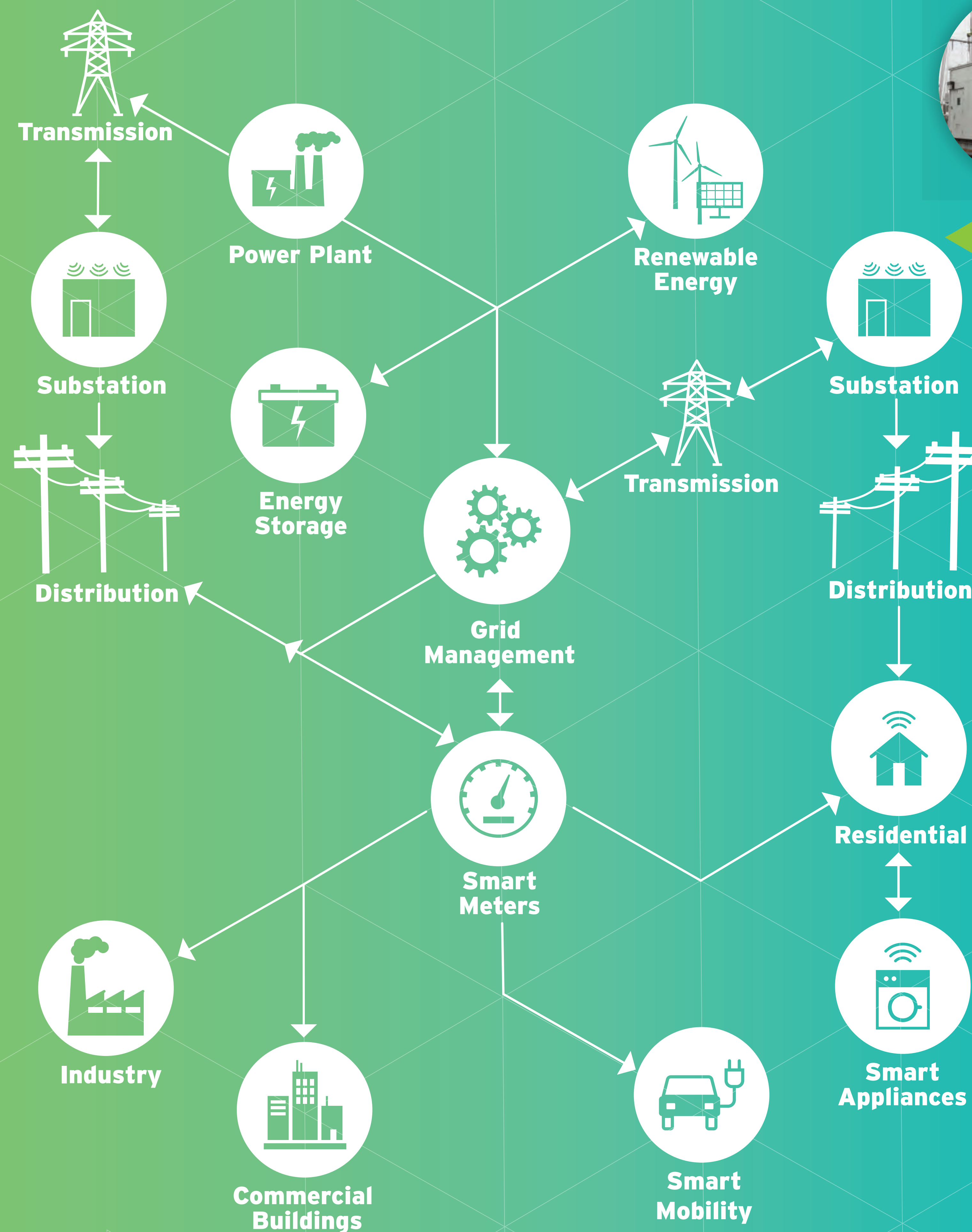


## Technology and Automation

» Integrated, high-tech distribution management systems

» Smart Meters

» Distributed Energy Resources integration



## Infrastructure Redesign

» Increase system capacity

» Convert and consolidate older systems



## Infrastructure Resilience and Hardening

» System hardening

» Circuit improvements

» Equipment replacements and upgrades